

EXPOSIM

Environmental stressors as causal determinants for immune-mediated diseases – mapping and prioritising evidence for knowledge-based policy-making

EXPOSIM will provide a strong evidence base to better understand how combined environmental stressors – such as air pollution, noise, and hazardous waste – impact our immune health.



70% 

EU citizens face urban stressors like pollution, chemicals, noise, and airborne allergens (fungi, bacteria from waste)

10-25% 

of the population in Europe, especially children, are affected by IMDs, making them common NCDs.

20.3% 

current prevalence of autoimmune diseases in women

EXPOSIM SOLUTION

In EXPOSIM, we will combine large amounts of data from the literature, existing databases and study populations, case studies and knowledge from other sources to provide a strong evidence base for mapping the effects of combined exposure to environmental stressors on IMDs. Ultimately, this knowledge will be translated into policy recommendations, guidance and educational tools for health professionals and EU citizens to promote a healthy environment for healthy lives. Through the development of evidence-based policy recommendations, training tools and awareness materials, which will be distributed through our stakeholder community, we strive to create a health-promoting environment for all citizens in the European Union.

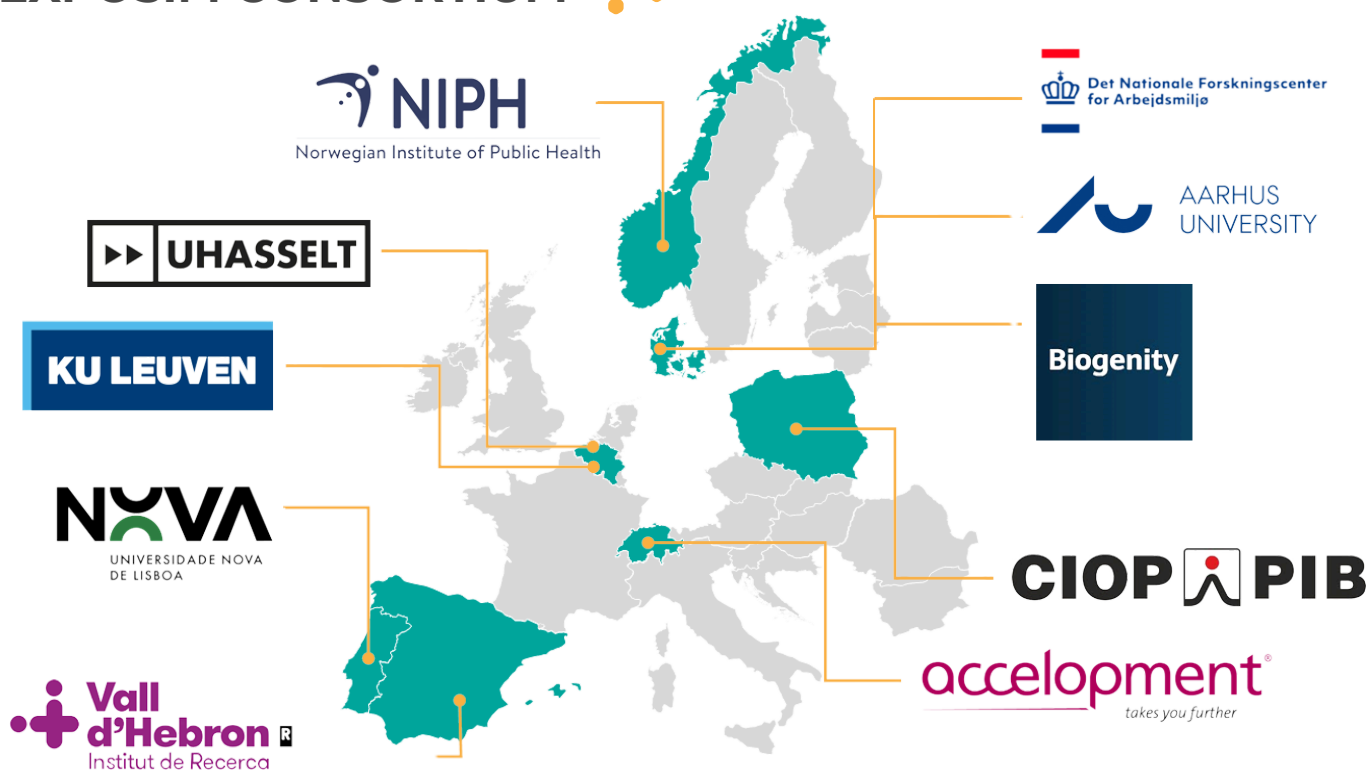


Funded by
the European Union

Funded by the European Union (grant no. 101156311). Views and opinions expressed are however those of the author(s) only and do not necessarily reflect those of the European Union or the European Health and Digital Executive Agency (HaDEA). Neither the European Union nor the granting authority can be held responsible for them. Swiss participants in this project are supported by the Swiss State Secretariat for Education, Research and Innovation.

EXPOSIM has ambitious objectives and to achieve them, it brings together a consortium of ten European partners with diverse expertise in exposome research. The consortium is geographically balanced and experienced, with members involved in projects such as EXIMIOUS, EPHOR, EHEN, PARC and METEOR. This interdisciplinary team includes experts in epidemiology, immunology, omics, data analytics, health economics, and social sciences and humanities. Through this collaboration, EXPOSIM aims to contribute to a better understanding of environmental factors on human health and contribute to the overall well-being of European citizens.

EXPOSIM CONSORTIUM



Get in touch

Dr Manosij Ghosh (KUL)

Project Co-coordinator

 manosij.ghosh@kuleuven.be

Prof Peter Hoet (KUL)

Project Co-coordinator

 peter.hoet@kuleuven.be



www.exposim.eu



info@exposim-project.eu



[@exposim](https://www.linkedin.com/company/exposim)



[@exposim](https://www.youtube.com/channel/UC...)



**Funded by
the European Union**

Funded by the European Union (grant no. 101156311). Views and opinions expressed are however those of the author(s) only and do not necessarily reflect those of the European Union or the European Health and Digital Executive Agency (HaDEA). Neither the European Union nor the granting authority can be held responsible for them. Swiss participants in this project are supported by the Swiss State Secretariat for Education, Research and Innovation.